

FIERA REAL ESTATE - UK INVESTMENT PLATFORM

 Currency
 GBP

ABOUT FIERA REAL ESTATE

- > Fiera Real Estate is the dedicated UK Real Estate arm of Fiera Capital Corporation.
- > Fiera Real Estate's UK division is an FCA regulated Real Estate Manager with a 28 year track record.
- > The business model is vertically integrated. It combines a UK investment management platform and an operating platform through a minority ownership in eight regional property companies.
- > Long serving senior management team with average of 15 years working together at Fiera Real Estate.

OPERATING PARTNERS

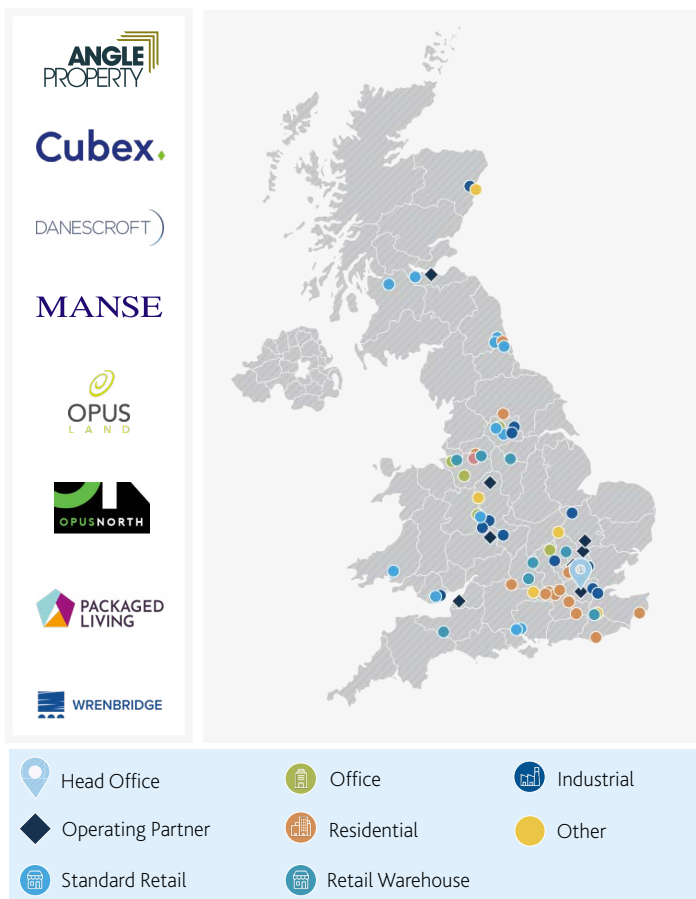
- > Fiera Real Estate owns a 33.3% shareholding in each regional property company, with the remainder owned by its senior management team.
- > This regional network provides investors into Fiera Real Estate funds with:
 - > Extensive geographic coverage
 - > Comprehensive access to deal flow
 - > Granular and local asset/project management

USD5.3 Billion
 AUM globally

£750 Million
 AUM in UK

66 Assets
 in UK 4.42m Sq ft

PORTFOLIO OVERVIEW AND OPERATING PARTNERS



KEY INVESTMENT THEMES

Core Income

- > Well-located assets in established commercial markets offering a good degree of liquidity;
- > Modern institutional grade buildings;
- > Well-let to strong/established tenants; and
- > Preferably market rented or under rented and therefore offering good scope for rental and income growth

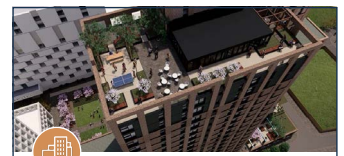
Value Add

- > **Urban logistics:** Buy land on arterial routes on edges of urban areas/ motorway junctions for 50k to 250k sq ft development of small to mid box industrial, delivery and logistics.
- > **Residential/Build to Rent ("BTR"):** Buy unconsented land with potential for residential uses and that is either **A)** brownfield or **B)** in local planning process, or urban property/land with potential for BTR-multi family.
- > **Other urban assets:** Income producing investments with asset management angles work with corporates to asset manage their existing holdings and repurposing accommodation surplus to requirements.



LONG TERM CORE INCOME

- > Long leased industrial unit, 25 years to National Express comprising 66,099 sq ft.
- > Acquired for £5.3m



BUILD TO RENT

- > 0.7 acre site, planning now achieved for 352 unit BTR scheme.
- > GDV* £80m



URBAN LOGISTICS

- > 8 acre site for speculative 200,000 sq ft prime urban logistics scheme.
- > GDV* £50m



RESIDENTIAL LAND

- > 5 acre site, planning submitted for 70 unit care home and 50 residential units.
- > GDV* £8m

ASSET VALUATION TOTAL BY SECTOR



■ Retail Warehouse	30.1%
■ Industrial	28.7%
■ Office	17.4%
■ Residential (inc. Land)	14.7%
■ Standard Retail	5.1%
■ Cash & Other Assets	4.0%

* GDV = Gross Development Value

CURRENT PRODUCT OFFERINGS

CORE

Fiera Real Estate Long Income Fund (UK) "FRELIF (UK)"

Fund type	Open ended, core
Fund NAV	£199m
Target net returns p/a*	4.0%-4.5% income return
Target leverage	0%
Target life	N/A
Thematics	<ul style="list-style-type: none"> ➢ Well located assets offering long, strong and progressive income characteristics ➢ Minimum average lease duration of 15 years ➢ Under rented offering good scope for rental income growth
Equity per deal	£5m-£20m
Minimum investment	£250,000
Subscriptions or redemptions**	Quarterly

*Target returns are not guaranteed. Actual results may vary.

**Redemptions are subject to restrictions.

VALUE ADD

Fiera Real Estate Opportunity Fund V (UK) "FREOF V (UK)"

Fund type	Closed ended, value add
Target size	£150m
Target net returns*	12%-15% net IRR
Target leverage	20%-30% at portfolio level
Target life	Maximum 6 years from first close
Thematics	<ul style="list-style-type: none"> ➢ Rezoning land to residential use ➢ Construction of pre-sold purpose build to rent accommodation ➢ Development of last mile logistics & industrial units ➢ Development of technologically enabled, flexible urban assets ➢ Asset management of undermanaged and/or undercapitalised assets
Equity per deal	£3m-£25m
Minimum investment	£5m per investor group
Subscriptions	Quarterly (within investment window)

UK CORE OR VALUE ADD SEGREGATED ACCOUNT OPPORTUNITIES

Fiera Real Estate also offer a segregated account opportunity in both the core and value add space if the above funds do not fit your investment criteria. These opportunities can be tailored to your investment needs. We are targeting a minimum mandate size of c.£30m for these potential UK vehicles following the thematics for each strategy set out above.

WHY CHOOSE FIERA REAL ESTATE

- ⊙
Widespread UK geographic coverage:
 Offering extensive access to deal flow, and granular asset management capability via minority ownership in eight regional operating partners.
- ⊙
25 year+ track record:
 Demonstrated investment model with access to global and local market intelligence.
- ⊙
Alignment:
 Co-investment alongside clients at every level ensuring that interests are aligned.
- ⊙
Rigorous approach to risk & return:
 Strong pursuit of investment performance by actively managing assets and relationships.
- ⊙
Strong focus on ESG:
 All assets owned or being developed are technologically and climate change resilient.

CONTACT DETAILS



Emma Murray
 Business Development Director, UK

Queensberry House
 3 Old Burlington Street
 London, W1S 3AE

+44 746 915 8805
Emma.Murray@fierarealestate.com



Charles Allen
 Head of Transactions, UK

Queensberry House
 3 Old Burlington Street
 London, W1S 3AE

+44 780 960 7378
Charles.Allen@fierarealestate.com

DISCLAIMER

Fiera Real Estate UK Limited and Fiera Real Estate Investors UK Limited ("FRE UK") has taken all reasonable care to ensure that the facts stated in this presentation are true and accurate in all material respects. Recipients must rely, however, on their own assessment of the information presented herein.

Certain of the information contained in this presentation has been obtained from published sources prepared by other parties. Neither FRE UK nor any other person assumes any responsibility for the accuracy or completeness of such information. Other than as set out above, no representation made or information given in connection with any fund, mandate or asset may be relied upon as having been made or given with the authority of FRE UK and no responsibility is accepted by FRE UK, its subsidiaries or associates or any of their directors, officers, employees, agents or any other person in respect thereof.

The delivery of this presentation does not imply that the information herein is correct as at any time subsequent to the date hereof. All statements of opinion and/or belief contained in the presentation and all views expressed and all projections or statements relating to expectations regarding future events or the possible future performance of any fund, mandate or individual asset represent FRE UK's own assessment and interpretation of information available to it as at the date of this presentation. No representation is made or assurance given that such statements, views or projections are correct or that the objectives of any fund or mandate will be achieved. Recipients must determine for themselves what reliance (if any) they should place on such statements, views or projections and no responsibility is accepted by FRE UK in respect thereof.

The information contained within this document may be confidential or commercially sensitive. It should not be passed to any other person by the recipient without the prior consent of FRE UK. If requested the recipient shall return this presentation (and any copied made of it) to FRE UK or confirm that they have destroyed the same. This document does not constitute an offer or invitation to subscribe or purchase interests in any fund, mandate or asset. It should not be relied upon by any persons for any purpose.

Issued by Fiera Real Estate Investors UK Limited (FRN:229905) authorised and regulated by the Financial Conduct Authority. Registered in England and Wales. Registered Number 04916155. Registered office Queensberry House, 3 Old Burlington Street, London, W1S 3AE.

Fiera Real Estate UK Limited. Registered in England and Wales. Registered Number 01531949. Registered office Queensberry House, 3 Old Burlington Street, London, W1S 3AE.